



Installation Guide

OHV Suite Installation and Configuration Guide

ohv diagnostic GmbH

December 20, 2018



Imprint

Responsible for the content:

ohv diagnostic GmbH
Großenhainer Str. 101
01127 Dresden
Germany

Tel.: +49 (0) 351 79527300
Fax: +49 (0) 351 79527301
E-Mail: info@ohv-diagnostic.com
Web: www.ohv-diagnostic.com

Legal Information:

Copyrights and other rights in the entire content are reserved for ohv diagnostic GmbH, hereinafter called OHV. The entire content of that manual is copyright protected. Any reproduction, transmission, modification, linking or use for any other purposes, either commercially or publicly are prohibited without written approval of OHV. OHV verifies and reviews the information. In spite of all diligence, data and technology may have changed in the meantime. Liability and guarantee for up-to-dateness, correctness and completeness can therefore not be given. Furthermore, OHV reserves the right to change or up-date any information at any time and without any further notice. OHV and its related companies reserve all rights in this document and in the information contained therein. Without written consent of OHV, no part of this manual is allowed to be photocopied or reproduced, in any form. Changes and modifications of this manual are reserved by OHV without any previous notice. OHV is not liable for any technical or printing errors in this manual. Likewise, OHV does not assume any liability for damages, which have been caused directly or indirectly while delivering or using this material.



Revision List

Revision	Date	Author(s)	Description
01	08/01/2017	MH	Initial Revision
02	08/03/2017	JP	Document Number
03	12/20/2018	JP	Installation Guide

Symbols and Abbreviations

Used Symbols



This symbol displays a warning message. Warnings are important information which are used to highlight important facts and must not be ignored!



This symbol is used to provide additional information which are an addition to the surrounding text and may be used to prevent ambiguities.

Abbreviations

IPv4	Internet Protocol Version 4
IPv6	Internet Protocol Version 6



Contents

1	Installation Guide	1
1.1	Introduction	1
1.2	Opening the setup and installing the software	1
2	Network Configuration	4
2.1	Introduction	4
2.2	Opening the network adapter configuration	4
2.3	Configure IPv4 address	7
3	Web Client	9
3.1	Introduction	9
3.2	Startup	9
3.3	Custom Connection Parameters	11

Installation Guide

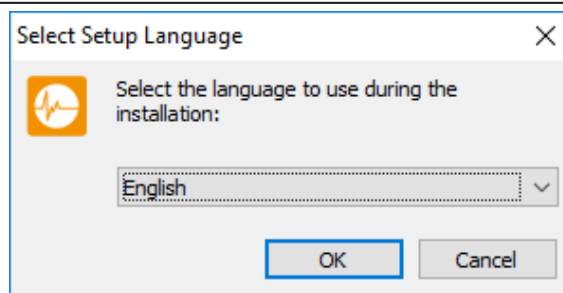
1.1 Introduction

This document describes the process of installing the OHV Suite software suite.

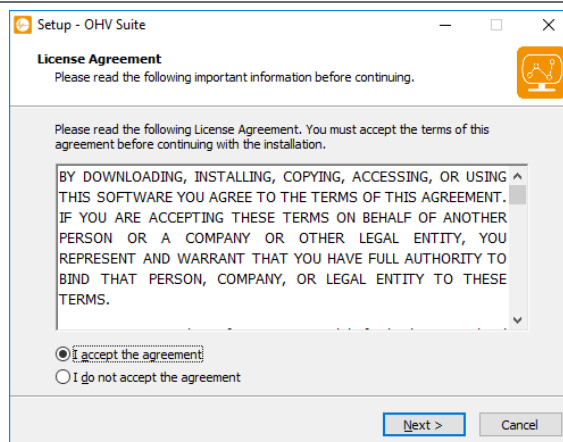
1.2 Opening the setup and installing the software

When the setup is started a confirmation prompt is shown. Depending on the operating system the steps for the installation may differ. The setup can be aborted at any point using the *Cancel* buttons.

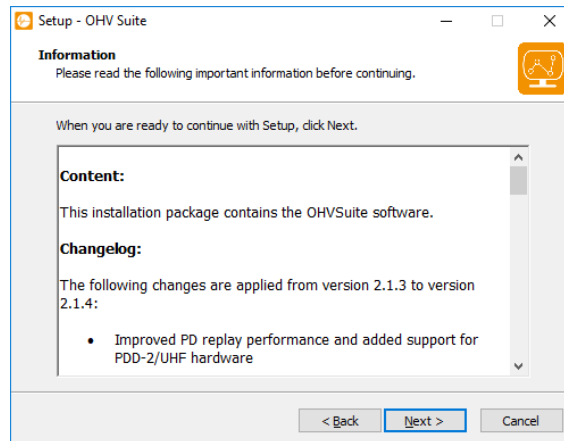
Click on the setup executable and wait for the confirmation prompt. After confirming the execution a language selection prompt is shown.



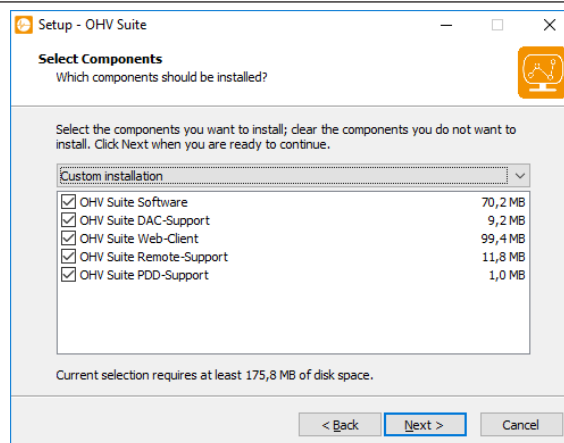
In order to install the application the license agreement must be accepted. Clicking the *Next* button will continue with the setup.



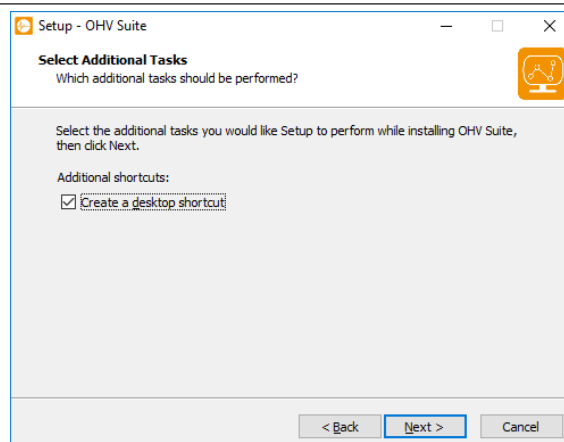
The change log is shown next. This contains a short summary for the changes in the current version. Clicking the *Next* button will continue with the setup.



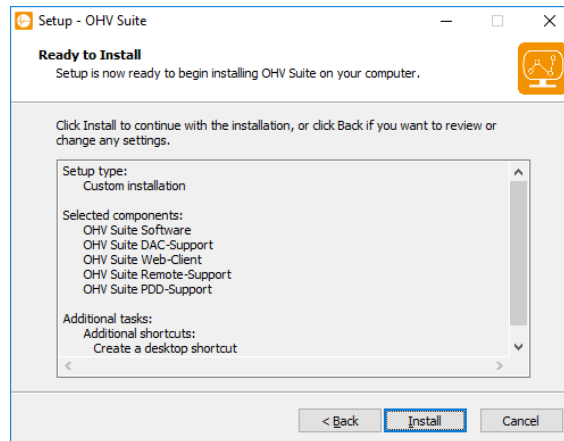
Select the different components is performed in the next step. If PDD functionality is required, the custom selection (as shown in the picture) must be used.



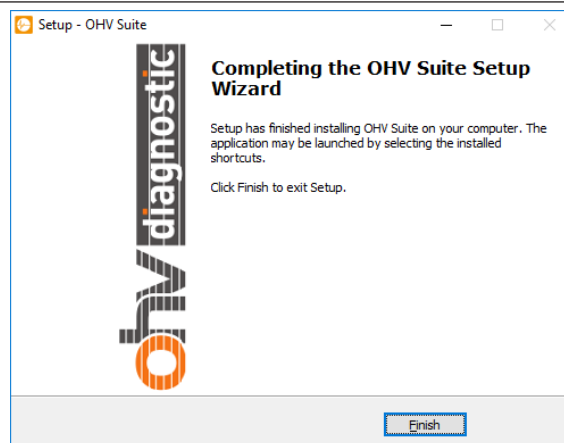
The setup may create a desktop shortcut if needed. Clicking the *Next* button will continue with the setup.



This page is the last page before the setup will actually install the software. Until this point no new files are installed. The page shows all selected components and installation options.



After the installation a final confirmation page is shown.



Network Configuration

2.1 Introduction

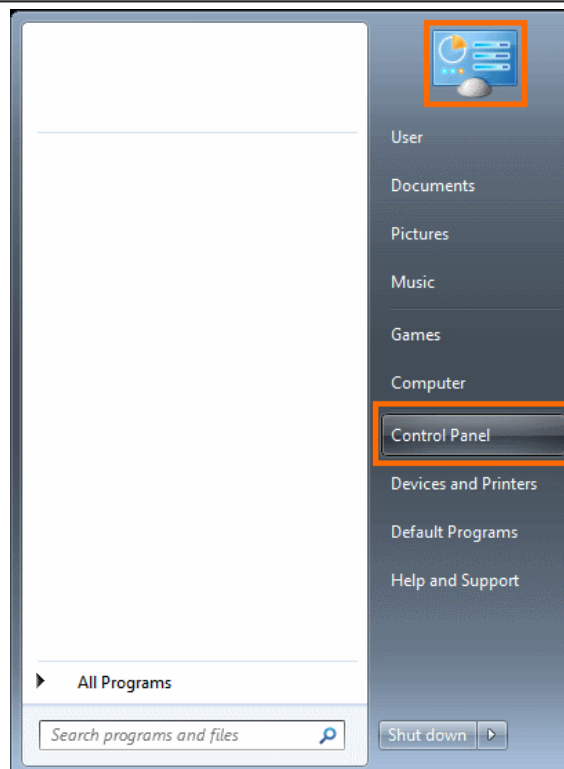
This document describes the process of configuring a network adapter for accessing any OHV web-based device.

2.2 Opening the network adapter configuration

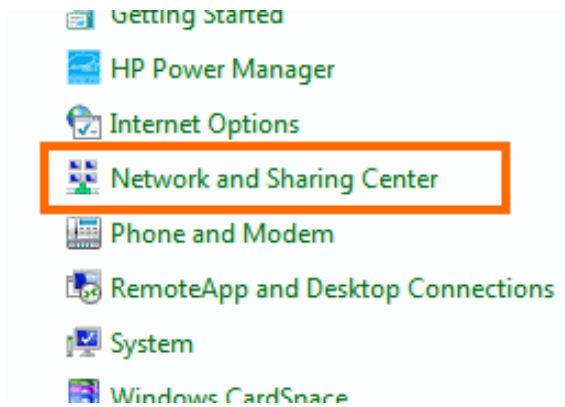
In order to open the network adapter overview you first need to open the control panel on your PC. Refer to the section matching your operation system.

Windows 7

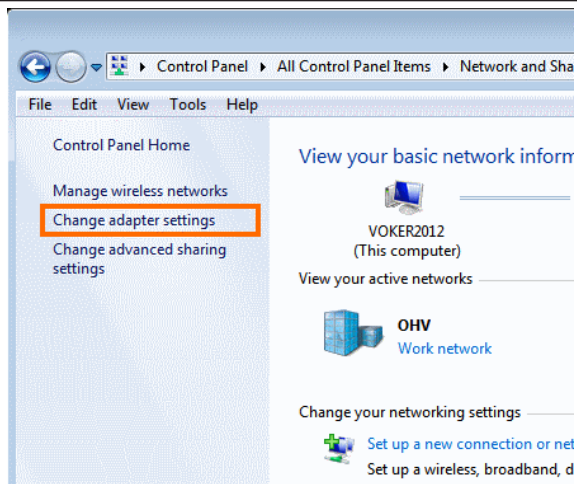
Click on the StartButton and then choose Control Panel



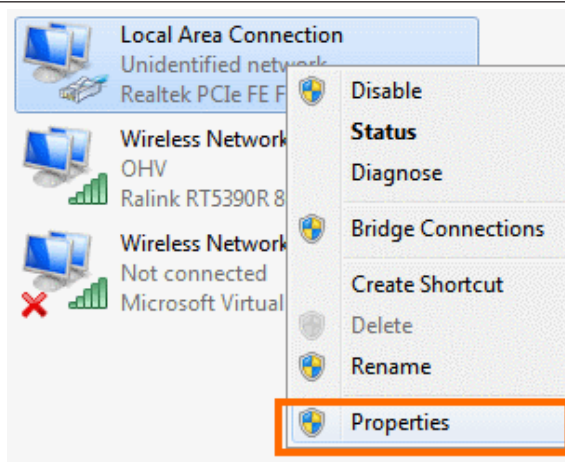
Change the display from categories to small symbols on the upper right side and then click on *Network and Sharing Center*



Click on the left-hand side on adapter settings

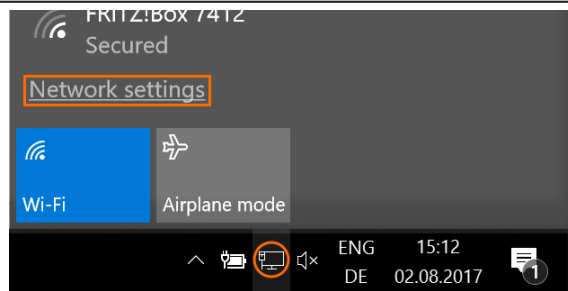


Right-click on your network adapter, which is connected to your device and then click on properties

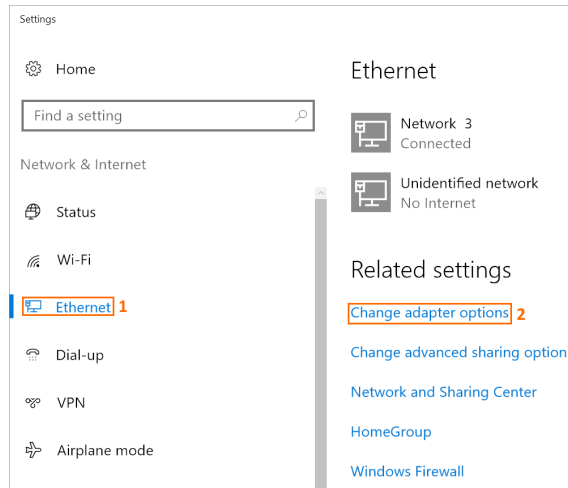


Windows 10

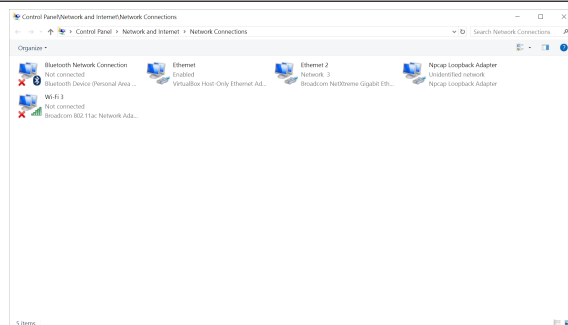
Click on the network tray icon and the on *Network settings*



Ensure that you are on the *Ethernet* Tab (1) and then click on *Change adapter options* (2)



Right-click on the network adapter, which is connected to your device and then click on properties



2.3 Configure IPv4 address

Two steps are required to configure the actual network address for the selected network adapter. After opening the properties for a specific adapter, the menu from Figure 2.1 appears. In the menu the IPv4 entry must be selected and opened with the [Properties] button. Ensure that the listed IPv4 address and the subnet mask is entered as shown in Figure 2.2.

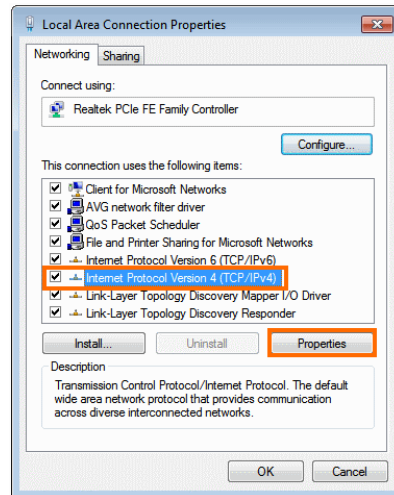


Figure 2.1: Network adapter properties

IP Address 192.168.42.100
Subnet Mask 255.255.255.0



Please ensure that the chosen IPv4 address is not already used in the network. The static IPv4 address on the back of the device is an already used address.

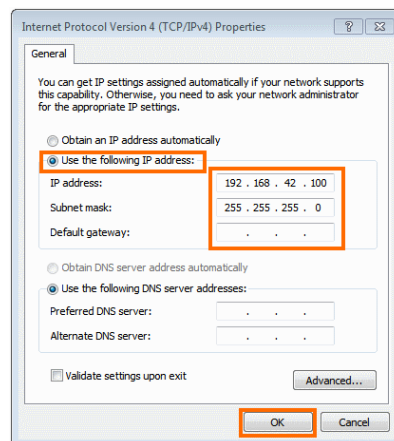


Figure 2.2: IPv4 network address configuration

Once all information are entered into the respective fields, all opened dialogs for the network adapter configuration must be closed with the [Ok] buttons. The OHV web-based device can be accessed on any web browser by entering the IPv4 address located on the back of the PD Device into the address bar as shown in Figure 2.3. Alternatively the OHV Web-Client is provided to simplify the connection to OHV web-based devices (cf. Chapter 3).

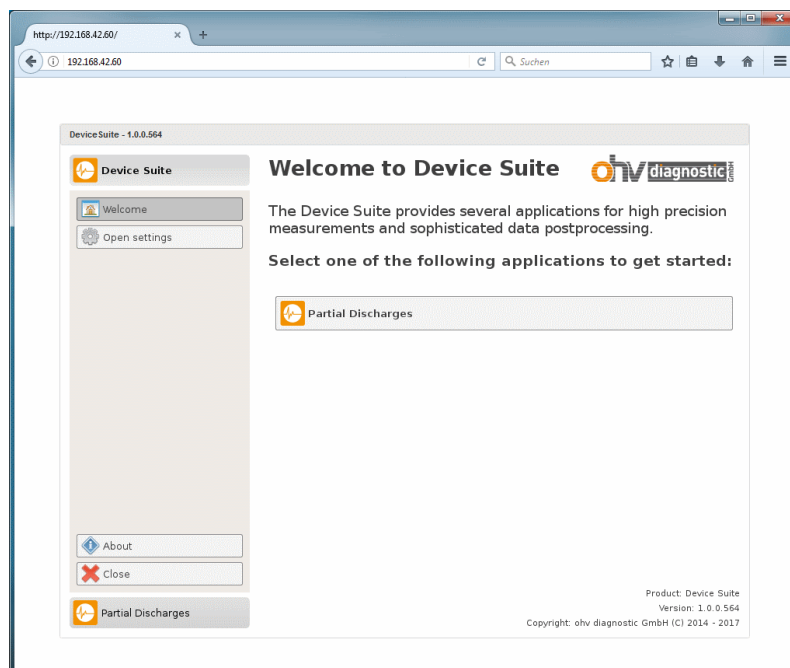


Figure 2.3: Accessing an OHV web-based device

Web Client

3.1 Introduction

The OHV Web Client can be installed through the OHV Suite installation or through its own setup file. The Web Client tool provides convenient access to the interface of all OHV web-enabled devices. After you installed the Web Client a new icon can be found on your desktop (cf. Figure 3.1).



Figure 3.1: The icon of the web-client

3.2 Startup

On Startup, the client tries to connect to the default IPv4 Address: 192.168.42.50 on Port 80 (cf. Figure 3.2). If this connection attempt is unsuccessful (cf. Figure 3.7), you will be prompted to enter specific connection parameters (see Section 3.3 for details).

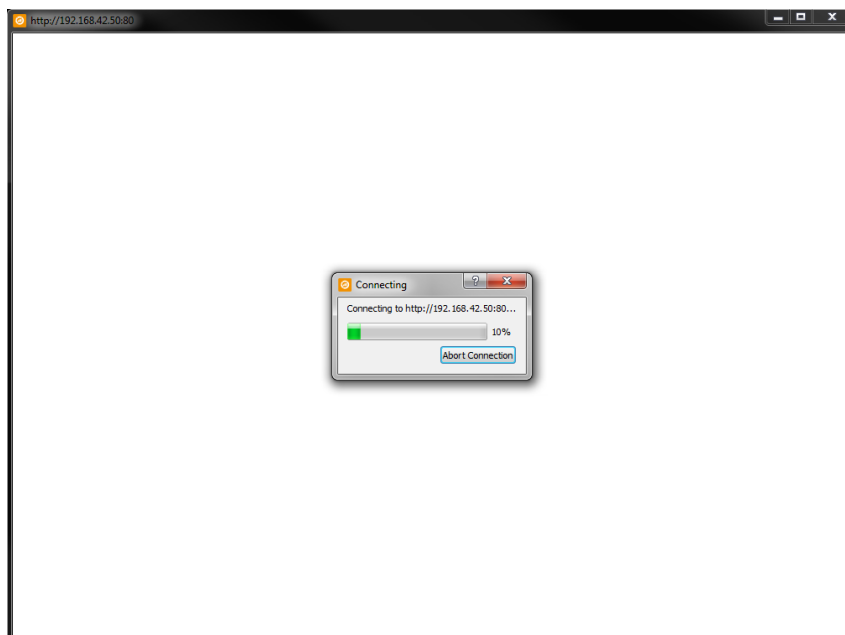


Figure 3.2: The default startup screen

If the web interface window is closed, the web client remains active in the system tray. Right clicking on the tray icon presents a Popup-Menu. The Menu can be used to open new connections or access the last used device addresses. The last used addresses will be displayed either with the supplied name or the combination of IPv4 address and port. A new connection can be created using the *New Host...* entry.



Figure 3.3: The tray icon of the web client

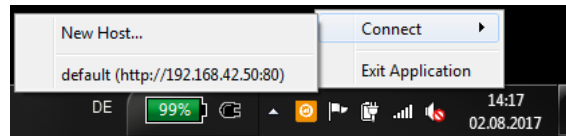


Figure 3.4: The web-clients context menu

In case the tray icon is not visible after starting the application, it may be hidden. To unhide the icon click on the arrow next to the other tray symbols (cf. Figure 3.5). Then drag the highlighted icon into the system tray as depicted in Figure 3.6.



Figure 3.5: The system tray

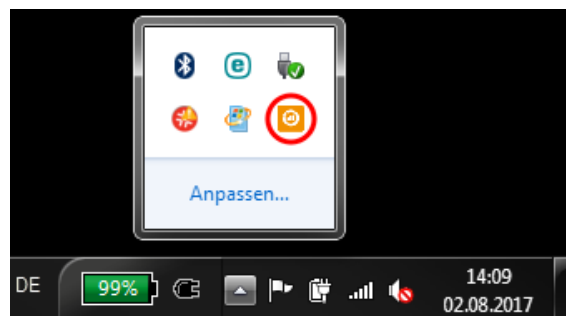


Figure 3.6: Hidden system tray symbols

3.3 Custom Connection Parameters

If no connection could be established with the entered connection parameters, the warning depicted in Figure 3.7 is shown. Providing custom connection parameters is possible through the dialog visualized in Figure 3.8.

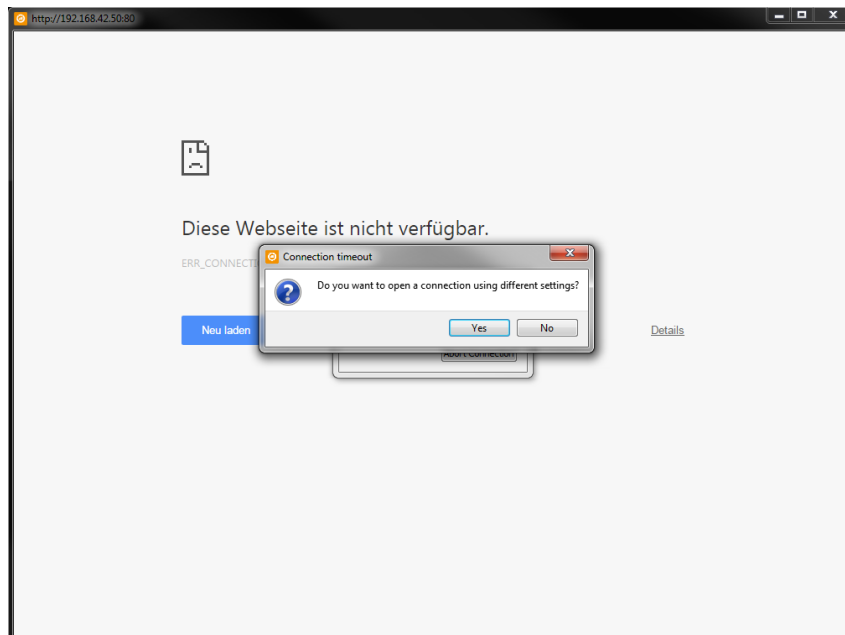


Figure 3.7: A connection failed

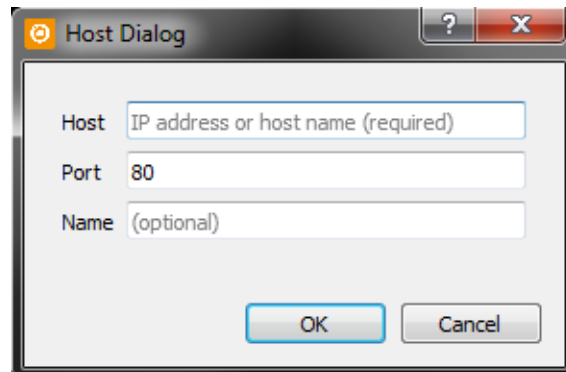


Figure 3.8: The Web Client Host Dialog

Host The IPv4 address of the DAC device

Port The port of the connection

Name (Optional) A descriptive name for this set of connection parameter